



radiology SA

Radiology SA Services

Radiology SA is a wholly doctor owned, South Australian company in North Adelaide, offering a comprehensive professional and caring service for your patients. Our highly skilled specialists are supported by a meticulous team of technologists who strive to provide benchmark results in imaging quality and excellent standards of patient care.

Featuring:

- **Multislice CT**
- **MRI**
- **Nuclear Medicine Studies (Brain SPECT/CT)**
- **Bulk Billing for all Pensioners and Health Care Card Holders for any examinations**
- **Highly skilled specialists in a caring environment**
- **Accommodating with appointments**

Structural and functional imaging can play an important role as adjuncts in the diagnosis and treatment of an increasing number of neurological and psychiatric diseases.

Please see over for Brain Spect/CT information

Memorial Hospital



Sir Edwin Smith Avenue, North Adelaide

Calvary North Adelaide Hospital



89 Strangways Terrace, North Adelaide

Appointments and Enquiries 8402 0200 Toll Free 1300 732 270

www.radiologysa.com.au



radiology | SA



Rey Casse MBBS, FRACP Neurologist and Nuclear Physician

Dr Casse received his Neurology fellowship in 1997 and his Nuclear Medicine fellowship in 2000. He holds a public appointment at the QEH where he is involved in clinical and research programs studying Brain SPECT in memory disorders, epilepsy, dementia and psychiatric disorders. As one of only two dually trained neurologist/nuclear physicians in Australia he is a recognised expert in Brain SPECT.

Brain Spect/CT

Brain SPECT is a functional nuclear medicine test which detects impaired regional cerebral blood flow. Specific changes in cerebral blood flow are present in many neuropsychiatric disorders and often precede clinical symptoms or CT/MRI abnormalities.

The specificity of brain SPECT is improved by comparison with structural imaging such as CT/MRI.

Our Nuclear Medicine Department has a hybrid camera which combines both brain SPECT and CT in the one scan.

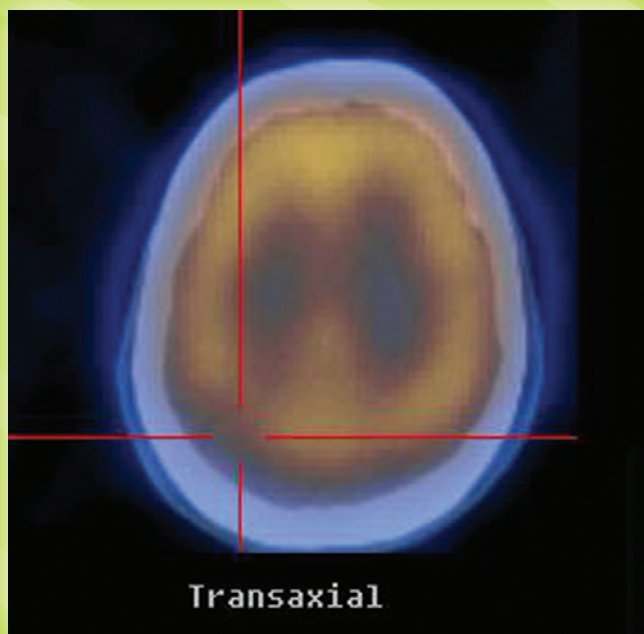
Brain SPECT/CT is useful in the evaluation of:

- **Dementia**
- **Epilepsy**
- **Psychiatric Disorders**
- **Head Injury**
- **TIA/Stroke**
- **Movement Disorders**

Brain SPECT/CT is especially useful in differentiating between the various clinical subtypes of dementia (for eg: Alzheimer's vs. Vascular Dementia).

This allows for a definitive diagnosis and therefore optimisation of treatment.

Please direct your enquiries to Dr Rey Casse on 8402 0200



Appointments and Enquiries 8402 0200 Toll Free 1300 732 270
www.radiologysa.com.au