

# Radiology SA

## Leaders in Medical Imaging

### 128-Slice CT Scanner

*Siemens 128-Slice CT Scanner opening at Calvary Hospital*



Thank you to everyone who attended the official opening of the **new 128-Slice CT scanner**. The launch was attended by The Hon John Hill, MP Minister for Health, and the evening was a great success. It is the **first CT**

**scanner of its type in private practice in South Australia**, offering better patient comfort with faster scan times, improved image resolution and potentially reduced radiation doses. For bookings please contact 8402 0262.

#### NEW AT CAMPBELLTOWN

**BMD and Mammography** are now available at our **North Eastern Community Hospital** rooms. Some breast and other fine needle aspirates (FNA) will also be performed on site. Please contact 8165 9050 for bookings or enquiries.

#### INTERVENTION SERVICE

Radiology SA offers a full interventional service including most pain relief procedures such as nerve root injections, epidurals, vertebroplasties.

Anesthetic cover can be arranged on request.

Contact 8402 0283 or Dr Mike Wilks directly on 0407 120 111.

#### BULK BILLING SERVICE

The Port Adelaide rooms offer a comprehensive service, including multi-slice CT and mammography with a radiologist on site at all times. All patients referred for imaging attracting a Medicare rebate are bulk billed. For direct room enquiries contact 8403 7401.

**IMAGES ONLINE**

If you would like to be able to view your patients radiology images our staff can set your office computer so that the images can be seen as soon as they have been performed. This requires a good internet connection otherwise this is a totally free service and easy to use. Please email [radiologysa@radiologysa.com.au](mailto:radiologysa@radiologysa.com.au) or call Jon Lennon-George on 8402 0245 if you would like more information or installation.

**BREAST MRI**

A Medicare Rebate is now available for women, referred by a specialist, who are at high risk of developing breast cancer. These studies can be performed at our Memorial rooms using our dedicated breast coil. For further information regarding this service contact Dr Viv Hall on 8402 0262 or visit our website outlining the criteria for Medicare eligibility.

**MAMMOGRAPHY AND BREAST BIOPSY**

All mammograms performed at our RSA clinics are double read by two radiologists. Stereotactic FNA and Core biopsy is available at our Calvary rooms.

**INTERVENTIONAL PROCEDURES AT MARION**

RSA is able to perform a number of interventional procedures at our Marion rooms. This includes fine needle aspirates of most breast and thyroid lesions. Other procedures include CT knee arthrograms. Dr Brian Roache can be contacted on 0421 306 532 for any further information.

**RSA BAGS FOR CHARITY**

RSA bags are available for purchase, all proceeds going to charity. To date \$920 has been donated to the Mary Potter Hospice.

**PENSIONERS AND HEALTH CARE CARD HOLDERS**

RSA bulk bills all these patients for any imaging or procedures that attract a Medicare rebate.



**CONTACT DETAILS**

T 8402 0200  
 F 8402 0247  
 E [radiologysa@radiologysa.com.au](mailto:radiologysa@radiologysa.com.au)

**Calendar**

**May 10th, 2009**

**Mothers Day.** When you make a donation to the Breast Cancer Research Appeal all proceeds will go to the Breast Cancer Institute of Australia for breast cancer research.

**May 28th, 2009**

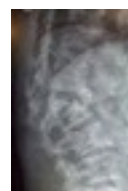
**Australia's Biggest Morning Tea.** This is the official day but you can host an event anytime between May and June. This is a great way to support many thousands of Australians affected by Cancer.

**August 7th-23rd, 2009**

**SALA- The South Australian Living Artists Festival.** Look out for artwork by our own Dr Vivian Hall.

**Medicare Rebates**

**BONE DENSITOMETRY**



All patients over 70 are eligible for Medicare rebates for BMD, even without a fracture.

**CT CORONARY ANGIOGRAMS**



A Medicare rebate for this is not yet available. The procedure is best performed on our 128 slice CT scan and

any enquiries can be directed to Dr Brett Lorraine.